

PROCENTEC



ComBricks Head Station 1A/1B/1C Technical Data

Technical Data - Head Station 1A (101-2011A)/1B (101-2011B)/1C (101-2011C)

Type differences (Hardware is identical with all types)

Head Station 1A	No ProfiTrace OE
Head Station 1B	ProfiTrace OE for 1 PROFIBUS network + ProfiTrace 2 live streaming + OPC (since June 2013)
Head Station 1C	ProfiTrace OE for 4 PROFIBUS networks + ProfiTrace 2 live streaming + OPC
For all Head Stations	CommDTM

Dimensions and weight

Dimensions L x W x H	135 x 25 x 103 mm (including backplane, per module)
Weight	150 g (excluding plug-able connectors and packing material)
Mounting DIN-rail type	35mm x 7,5mm (EN 50022, BS 5584, DIN 46277-3)

Ambient conditions

Ambient operating temperature range	-20° ... +60° Celsius (for mounting position see manual) -4° ... 158° Fahrenheit
Isolating class	IP 20 (IEC/EN 60529, DIN 40050)

Power supply

Power supply operating voltage range	12 to 24 VDC (tolerance range 11 to 26 VDC) Do not connect, if the power on backplane is supplied by a PWR-6A module.
Typical own Current consumption	73 mA at 24 VDC (externally powered) 230 mA at 5.72 VDC (externally or PWR-6A module powered)
Max. Current consumption	800 mA at 24 VDC (current consumption of other modules included)
Power dissipation	Max. 1.32 W (own power dissipation) Max. 20W (power dissipation of other modules included)
Reverse polarity protection	Yes
Redundant power supply	Yes
Wire diameter	< 2.5 mm ²

Installation notes:

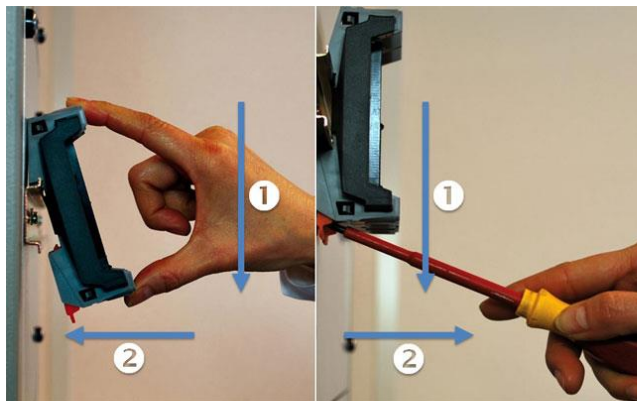
The device shall be supplied from an isolating transformer having a secondary Listed fuse rated either:

- Maximum 5 amps for voltages 12 to 20 V, or
- Maximum 4 amps for voltages 21 to 24 V,

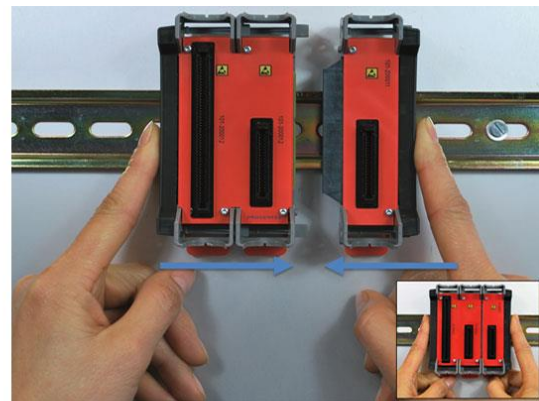
or is supplied by a Class 2 power supply, or equivalent.

Backplane	
Modules	32 (10 repeater modules positioned in the first 10 slots)
Current available for the backplane	2.5 A
PROFIBUS networks	4
Compatible backplane units	101-200022, 101-200023, 101-200024, 101-200027
Ethernet	
Connector	RJ-45
Cable length	Max. 100 m
Link speed	10 / 100 Mbps
MAC address	9C.B2.06.xx.xx.xx (label on the side of the Head Station)
Supported protocols	HTTP, FTP, SMTP, TELNET, DHCP, SNMP
Default IP address after reset/purchase	192.168.1.254
Connections	20 simultaneous web server clients
Relay contact	
Resistance	300 mOhm (plug included)
Voltage	24 VAC
Current	0.5 A
	<u>Installation notes:</u> The Relay output shall be supplied from an isolating transformer having a secondary Listed fuse rated either: <ul style="list-style-type: none"> • Maximum 5 amps for voltages 12~20 V, or • Maximum 4 amps for voltages 21~24 V, or is supplied by a Class 2 power supply, or equivalent.
SD Card	
Types	SD and SDHC
Size	Max. 32 GB (1 GB is provided)
Connector Lay-out	
Power supply	Plug-able screw connector, pitch 5,08 mm Pin - : 0 V Pin +: 24 VDC Pin SH: Shield SH connected internally to DIN-rail with spring-loaded contact
Alarm contact	Pin 1: NO Pin 2: NO potential-free relay contact, normally open

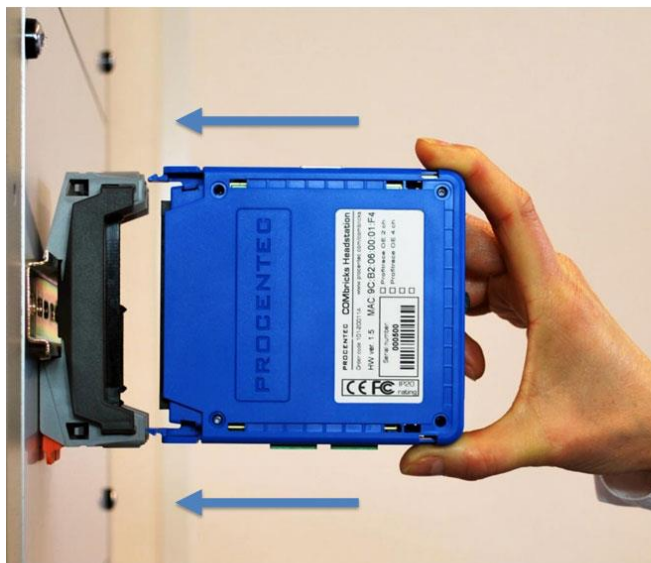
Standards and approvals	
CE	EMC Directive 2014/30/EU, class A Digital Device RoHS Directive 2011/65/EU
FCC	47 CFR 15, Unintentional Radiator, class A Digital Device.
UL	Report reference: E468970 Standards for safety: UL 508 - Industrial Control Equipment CSA C22.2 No. 142-M1987 - Industrial Control Equipment
Others	
MTBF	2873918 hours, at 30° Celsius, IEC TR 62380



Mounting and un-mounting backplanes



Adding additional backplanes



Inserting modules



Powering the Head Station

PROCENTEC BV | Klopperman 16 | 2292 JD Wateringen | The Netherlands
T: +31 (0)174 671 800 | F: +31 (0)174 671 801 | E: support@procentec.com | W: www.procentec.com